

LIFE CYCLE OF NON MULBERRY SILKWORMS

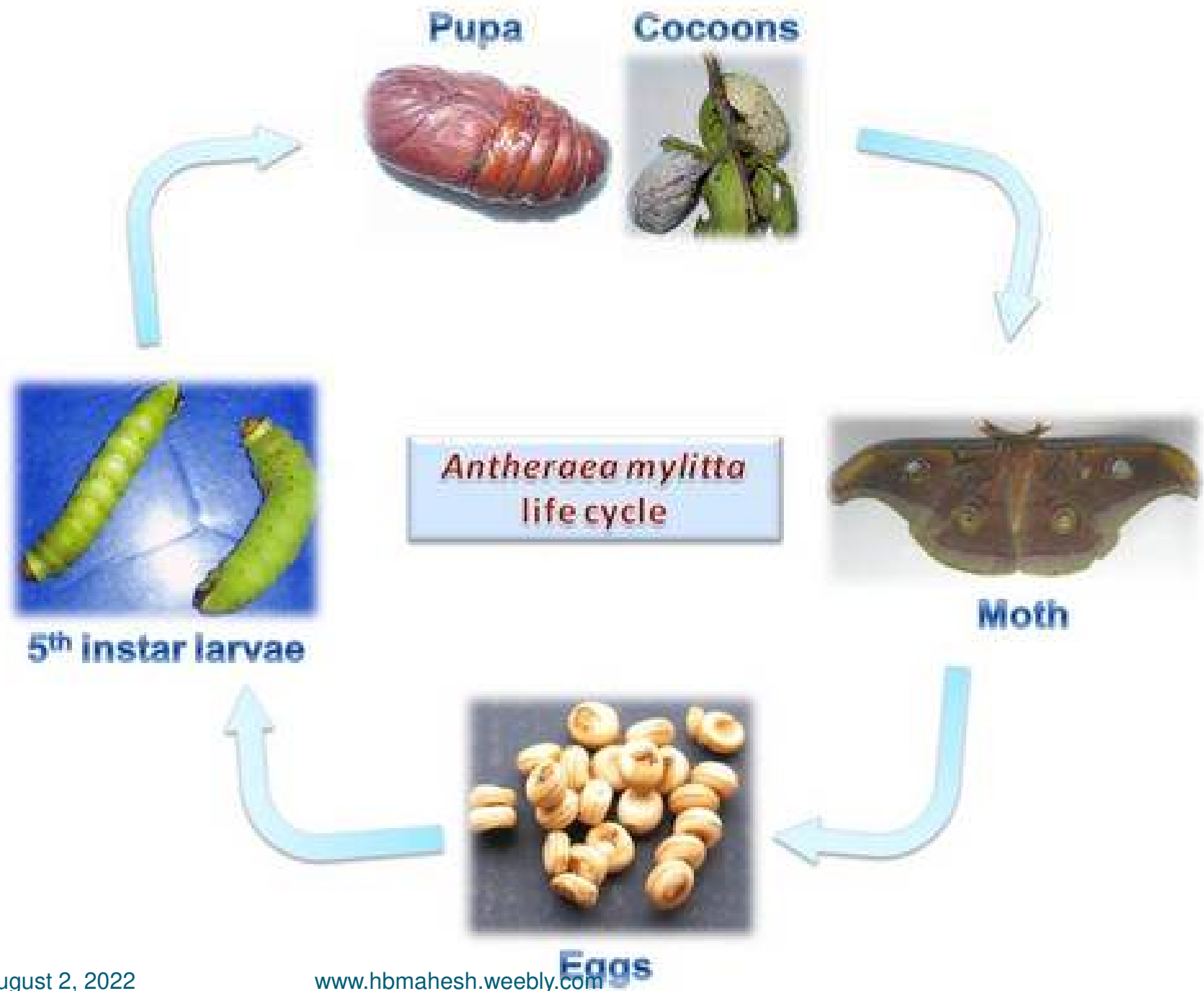
Dr. Mahesha H B
Professor and Head
Department of Sericulture
Yuvaraja's College,
University of Mysore, Mysore, India

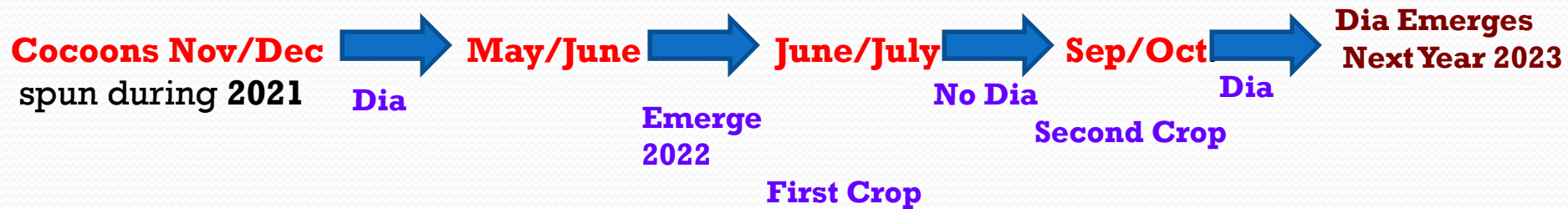
NON MULBERRY SILKWORMS

| TASAR | MUGA | ERI |
|---|----------------------|--------------------------|
| WILD | SEMI DOMESTICATED | DOMESTICATED |
| <p>Tropical Silkworm <i>A. Mylitta</i>, (India)</p> <p>Temperate Silkworm <i>A. Proyli</i>, (India) <i>A. Pernyi</i>, (China, Russia) <i>A. Yamamai</i>, Japan)</p> | <i>A. assamensis</i> | <i>Philosamia ricini</i> |



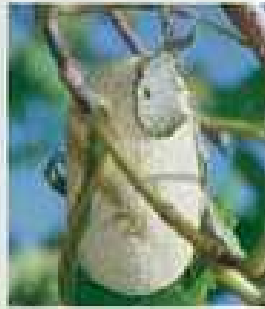
LIFE CYCLE OF TASAR SILKWORM







Adult worm



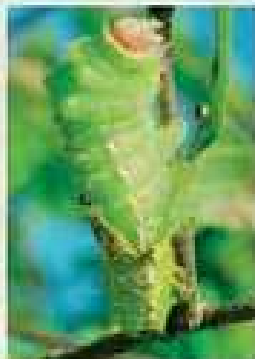
Cocoon Stage



Moth coupling



3-5 days



Moulting



Young worm



Hatching of worms

Name: *Antheraea Mylitta*
Duration of life cycle: 40-70 days
Feeds on: Arjuna and the Asan tree
Number of life cycles a year: 1, 2 or 3

26-28 days (first crop); 42- 45 days (second crop)



Oval, dorsoventrally flattened, bilateral symmetry.

3mm X 2.5mm & 10mg.

White, light yellow or creamy.

Two brownish parallel lines.



Dull brownish yellow with black head,
Measures 7 x 1 mm & Weighs 8 mg.
Turns green and head becomes brown.
Mature larva - 50 grams, 13 x 2.1 cm.
Silver shining spots appears



Cocoon - oval, closed and reelable, yellow or grey.
Pupa measures 4.5x2.3 cm and weighs 10.3 grams.
The sexual markings same as in case of mulberry silkworm



Exhibit sexual dimorphism.

The females are bigger (4.5cm) than Males(4.0cm)

Male wing span is about 16 cm.

Female wing span is 18 cm.

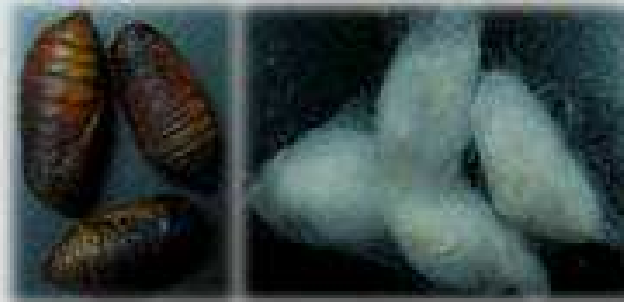


LIFE CYCLE OF ERI SILKWORM

MULTIVOLTINE

Pupae

Cocoons



14 DAYS



5th instar larva

Samia cynthia ricini
life cycle

44 (summer)-85 days (winter)



Moth

30-35 DAYS
5 instars



Eggs

10 DAYS
350-500 eggs



Egg: Ovoid & dull white

Measures 1.5 x 1.0 mm and weighs 6 mg



greenish yellow, 5 x 1 mm, 1.5 mg



Colour changes to pure yellow by the end of third day. From third instar onwards the colour segregates into yellow, cream, green, blue or white.
Mature larvae 7.0 x 1.5 cm and 8 gm



August 2, 2022

www.hbmahesh.weebly.com

14



Pupa is 2.8 x 1.5 cm in size and weighs 2.6 gm
Cocoons are elongated, soft, wooly, peduncleless,
open mouthed and unreelable.
It measures 4.0 x 2.5 cm and weigh 3 gm



The male moth is 2.5 cm long while female is 3 cm.



LIFE CYCLE OF MUGA SILKWORM

MULTIVOLTINE



Pupa

Cocoon

3 (summer)-6 days(winter)

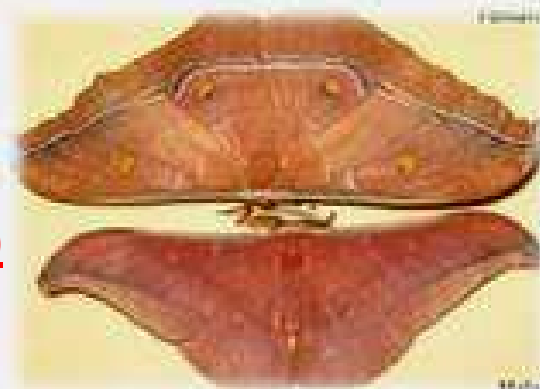
14 (summer)-24 days(winter)



5th instar larvae

Antheraea assama
life cycle

50 (summer)-120 (winter)



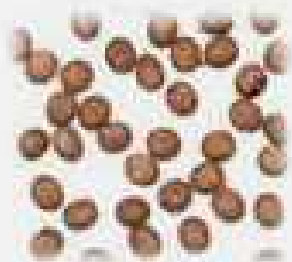
Moths

3 (summer)-6 days(winter)

24(summer)-52 days (winter)

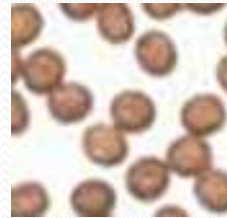


Freshly hatched larva



Eggs

5 (summer)-15 days (winter)



Eggs: Oval, dorsoventrally flattened, brownish, 2.8x2.5 mm and 9 mg





The pupa is copper brown measuring 3.2 x 1.8 cm weighs about 5.7 gm.



Cocoon: Is single shelled, light brown, oblong, closed, reelable and slightly flossy with a weak peduncle.

It is golden brown or glossy white, measures 5.2 x 2.4 cm and weighs 6.3 gm.



**Female moths are longer (3.5cm) than males (3 cm).
the wings are brown rarely with a pinkish tinge.
Wing span in males is about 13 cm and 15 cm in females.**



**Acknowledgements
to
INTERNET
FOR
PICTURES and PHOTOGRAPHS**